

# CARA Formation Survey SNAPSHOT



## About the Survey

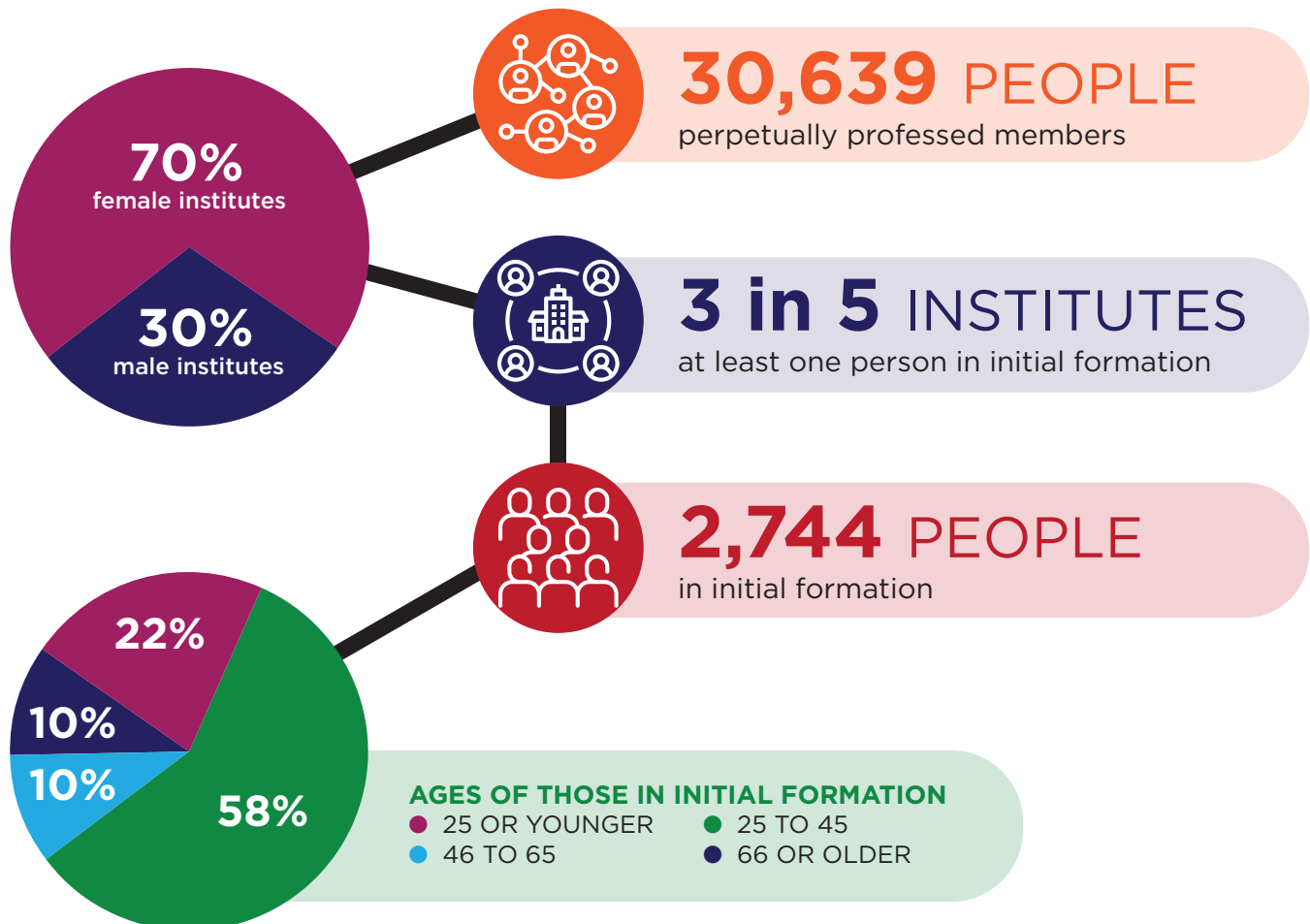
The study, *Religious Formation Programs of Religious Institutes in the United States*, presents findings of formation programs in religious life in the U.S. Research was conducted by the Center for Applied Research in the Apostolate (CARA) in the spring of 2022 in consultation with the RFC.

### Formation programs include:

1. Initial formation
2. Ongoing (lifelong) formation
3. Professional preparation of formators



## Characteristics of Responding Institutes



## Initial Formation

**2 in 3** INSTITUTES

indicate their novices interact with others in their institute or federation for formation activities



**70%** REPORT

temporary professed members interact with temporary professed from other institutes

**The MOST IMPORTANT topics in initial formation programs were identified as:**

- Religious vows
- Religious institute's history and charism
- Scripture and theology
- Apostolate
- Psycho-spiritual development
- Interpersonal skills, especially conflict management and communication skills

**When asked what is MISSING in initial formation, respondents identified the following curriculum gaps:**

- Multiculturality and integration
- Trained formators
- Life skills (e.g. communication skills)
- Scripture and theological training
- Community life
- Psychosocial development aspects

## Ongoing Formation & Preparation of Formators

**70%** REPORT

having an ongoing formation program



**34%** DEVELOP

their own virtual formation programs

**40%** INDICATE

members of the formation team have been professionally trained in formation ministry

**33%** PARTICIPATE

"often" in online ongoing formation opportunities

**The MOST IMPORTANT areas for those in formation ministry include:**

- Interpersonal skills
- Human growth and development
- Spiritual companionship

**25%** REPORT

it would be helpful for the RFC to offer consultation services around evaluating initial and ongoing formation programs

**90%** SAY

**the following topics are IMPORTANT in ongoing formation:**

- Theology
- Health and aging
- Addictions
- Mental health
- Interpersonal skills, especially conflict management and communication skills
- Contemporary issues in religious life



**SPIRITUALITY & RETREATS**  
were identified as the **MOST IMPORTANT** aspects of ongoing formation

To access the full report, including the data sets, visit [relforcon.org/survey-snapshot](https://relforcon.org/survey-snapshot)